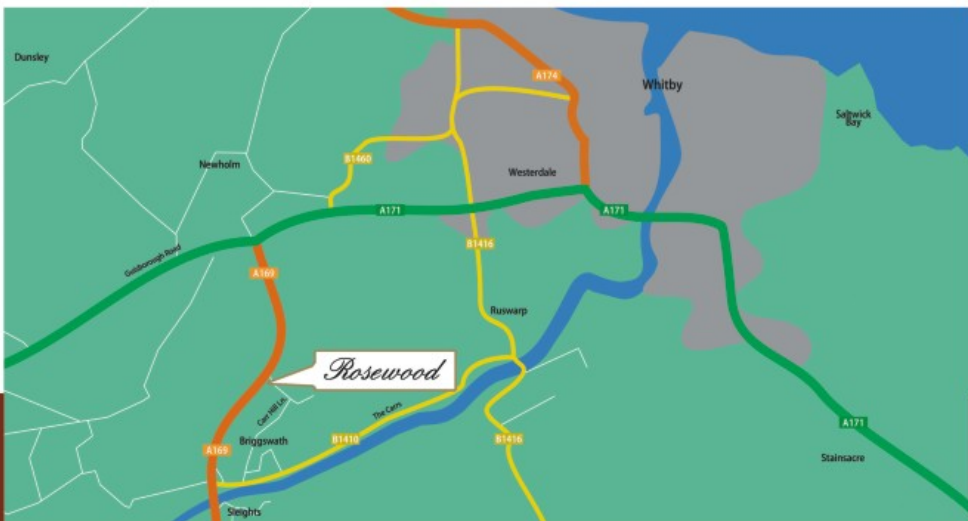


MANDALE HOMES 
Select Properties



Rosewood, Carr Hill Lane, Briggswath, Sleights

Sat. Nav. YO21 1RZ (guide only)

Rosewood

Contact:

01642 605514 or 0845 650 5555

07969 244340

harriet@mandale.com

mandale.com

Reeds Rains

The Estate Agent

7 Flowergate, Whitby YO21 3BA

01947 820066

MANDALE HOMES 
Select Properties

Rosewood



Sleights, Whitby, North Yorkshire

*Four unique plot opportunities
of 5 & 6 bedroom
detached executive homes*

mandale.com

The information contained in this price list information sheet, floor plans, brochures and any other marketing material is for general guidance only. It should be noted that many of the images and pictures of the buildings, plans and surroundings are artists impressions or computer generated and are indicative illustrations only. Mandale reserve the right to alter any part of the development, specification, floor plans and internal layouts as the scheme progresses. All measurements and floor areas are approximate and have been estimated from architects plans and are, therefore, subject to change and confirmation.



Provence House (Plot 1)

Gross internal floor area: 253 sqm (2720 sq.ft) approx
Plot area: 769 sqm (8275 sq.ft)



Rugosa House (Plot 2)

Gross internal floor area: 214sqm (2300 sq.ft) approx
Plot area: 940 sqm (10,115 sq.ft)



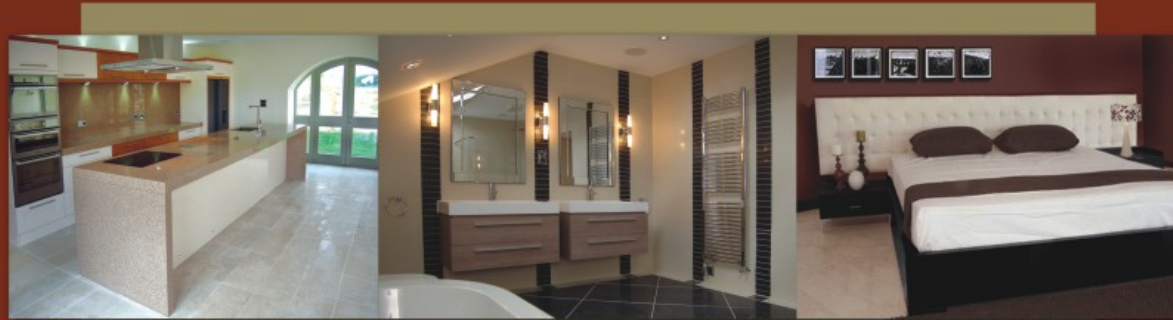
Honeysweet House (Plot 3)

Gross internal floor area: 250 sqm (2690 sq.ft) approx
Plot area: 1018 sqm (10,950 sq.ft)



Dumalis House (Plot 4)

Gross internal floor area: 203 sqm (2185 sq.ft) approx
Plot area: 1514 sqm (16,290 sq.ft)



Rosewood

Contact:

01642 605514 or 0845 650 5555

07969 244340

harriet@mandale.com

mandale.com



An excellent opportunity to design your dream home in this outstanding location

MANDALE HOMES 

Select Properties

MANDALE HOMES 

Select Properties
Rosewood

Provence House



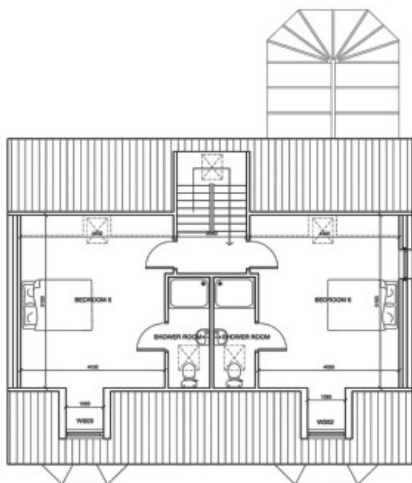
Gross internal floor area:
253 sq.m (2720 sq.ft) approx

mandale.com

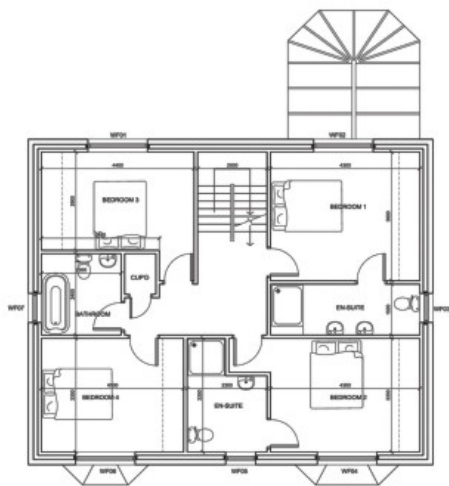
Rosewood

Provence House

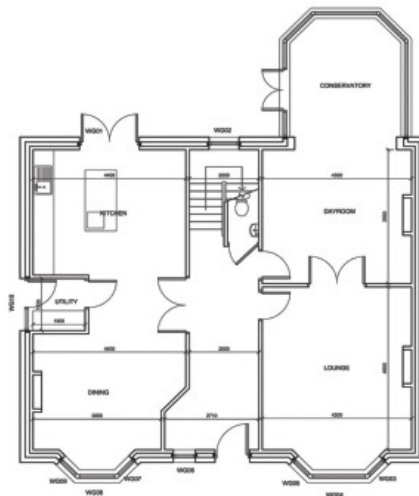
Preliminary internal layout



PROPOSED SECOND FLOOR



PROPOSED FIRST FLOOR



PROPOSED GROUND FLOOR

The artist's colour drawing is from an imaginary viewpoint within an open space area. Its purpose is to give a feel for the development, not an accurate description of each property. The illustration shows a typical Mandale home of this type, but there are, however, variances from site to site. External materials, finishes, landscaping & the position of garages, (where provided) may vary throughout the development. Please enquire for further details.



MANDALE HOMES 

Select Properties
Rosewood



Rugosa House



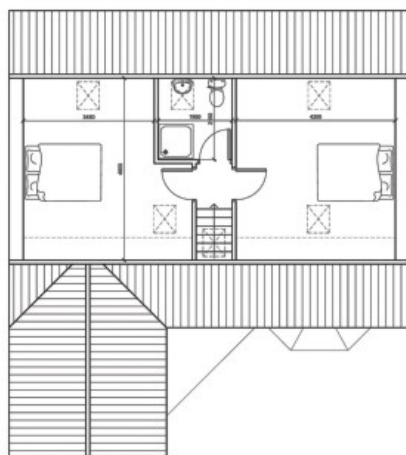
Gross internal floor area:
214 sq.m (2300 sq.ft) approx

mandale.com

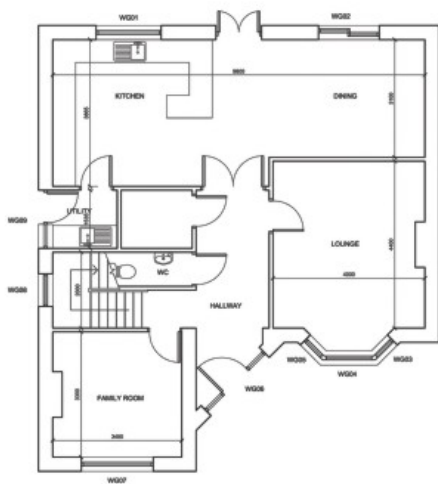
Rosewood

Rugosa House

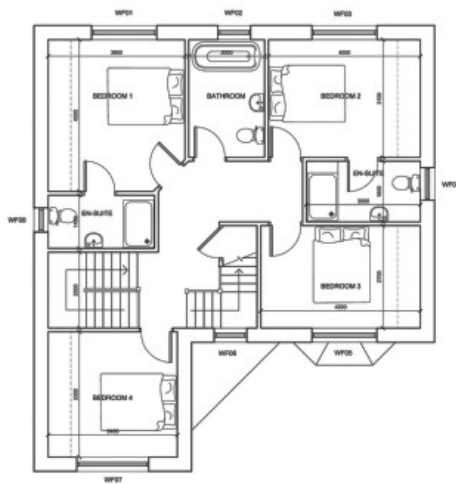
Preliminary internal layout



PROPOSED SECOND FLOOR PLAN



PROPOSED GROUND FLOOR PLAN



PROPOSED FIRST FLOOR PLAN

The artist's colour drawing is from an imaginary viewpoint within an open space area. Its purpose is to give a feel for the development, not an accurate description of each property. The illustration shows a typical Mandale home of this type, but there are, however, variances from site to site. External materials, finishes, landscaping & the position of garages, (where provided) may vary throughout the development. Please enquire for further details.



MANDALE HOMES 

Select Properties
Rosewood

Honeysweet House



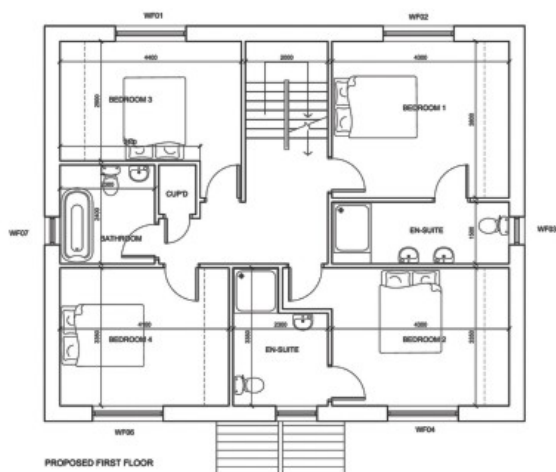
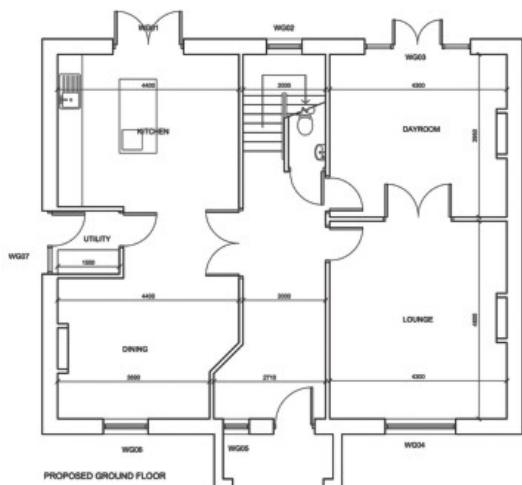
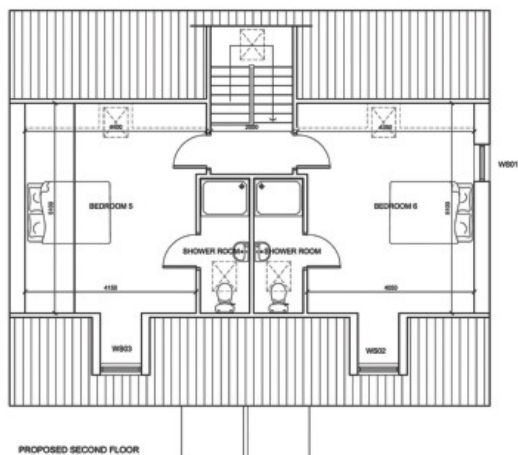
Gross internal floor area:
250 sq.m (2690 sq.ft) approx

mandale.com

Rosewood

Honeysweet House

Preliminary internal layout



The artist's colour drawing is from an imaginary viewpoint within an open space area. Its purpose is to give a feel for the development, not an accurate description of each property. The illustration shows a typical Mandale home of this type, but there are, however, variances from site to site. External materials, finishes, landscaping & the position of garages, (where provided) may vary throughout the development. Please enquire for further details.



MANDALE HOMES 

Select Properties
Rosewood



Dumalis House



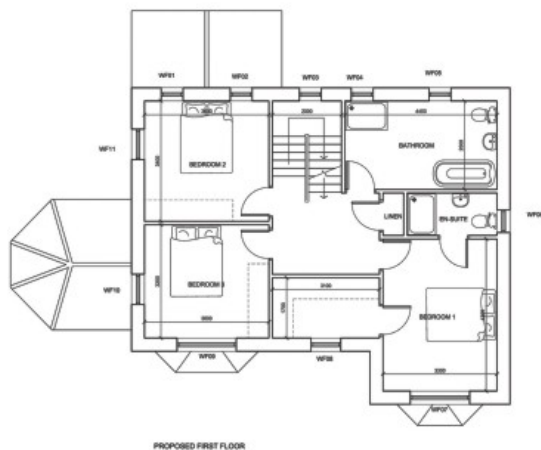
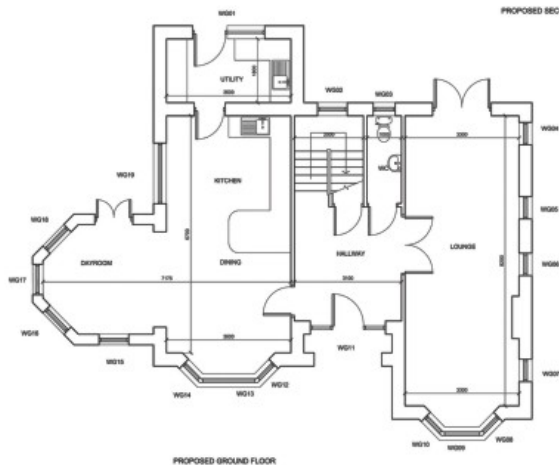
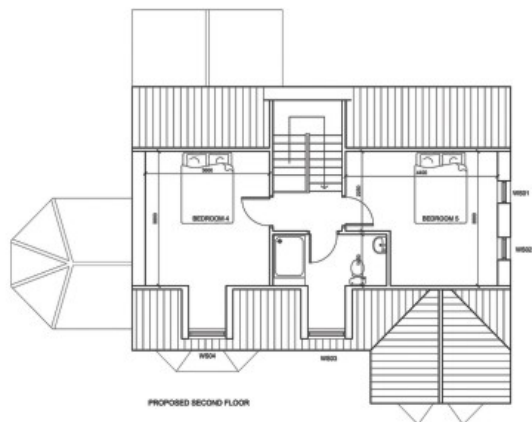
Gross internal floor area:
203 sq.m (2185 sq.ft) approx

mandale.com

Rosewood

Dumalis House

Preliminary internal layout



The artist's colour drawing is from an imaginary viewpoint within an open space area. Its purpose is to give a feel for the development, not an accurate description of each property. The illustration shows a typical Mandale home of this type, but there are, however, variances from site to site. External materials, finishes, landscaping & the position of garages, (where provided) may vary throughout the development. Please enquire for further details.

